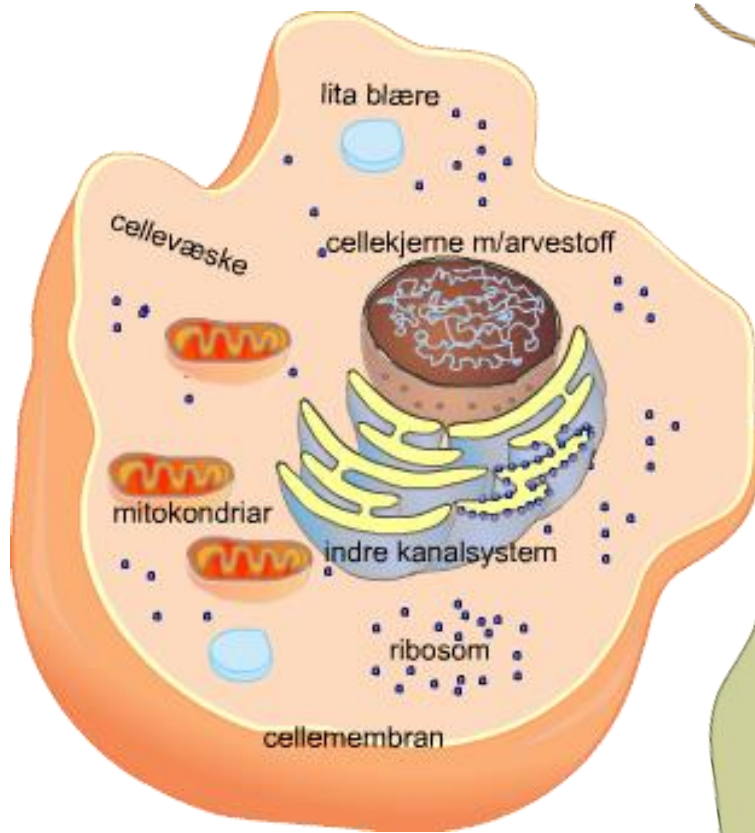
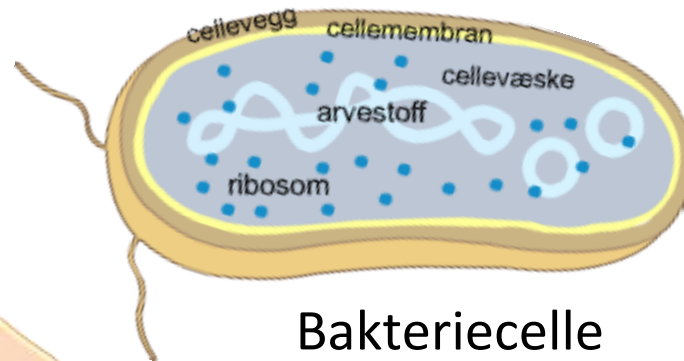


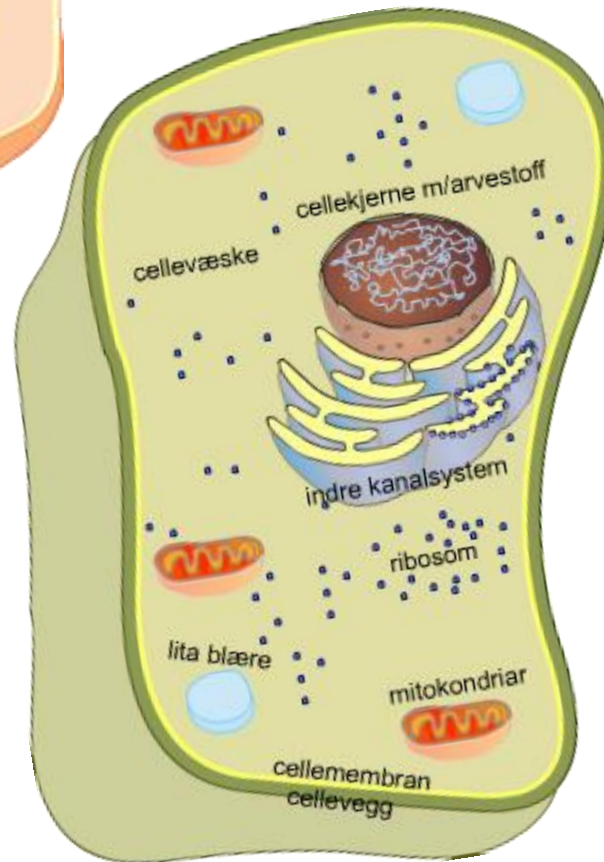
	Celler utan cellekjerne	Celler med cellekjerne		
	Bakterieceller	Planteceller	Dyreceller	Soppceller
<b>Cellemembran</b>	Ja	Ja	Ja	Ja
<b>Cellekjerne</b>	Nei	Ja	Ja	Ja
<b>DNA</b>	Ja	Ja	Ja	Ja
<b>Cellevegg</b>	Ja (protein)	Ja (cellulose)	Nei	Ja (kitin)
<b>Mitokondriar</b>	Nei	Ja	Ja	Ja
<b>Kloroplastar</b>	Nei	Ja	Nei	Nei
<b>Ribosom</b>	Ja	Ja	Ja	Ja
<b>Indre kanalsystem</b>	Nei	Ja	Ja	Ja
<b>Blærer</b>	Nei	Ja, store (vakuolar)	Ja, små	Ja, små



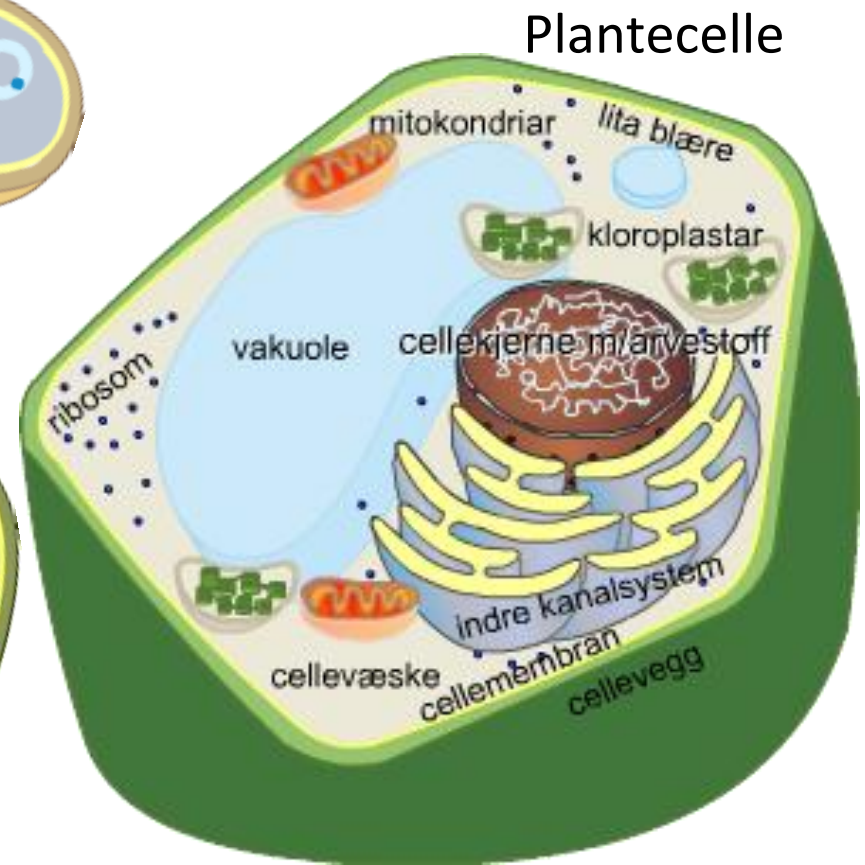
Dyrecelle



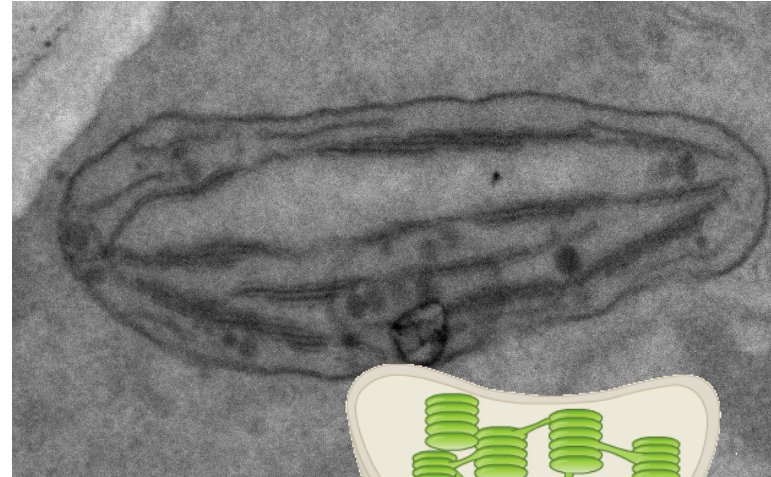
Bakteriecelle



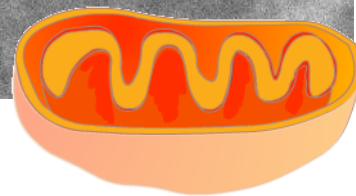
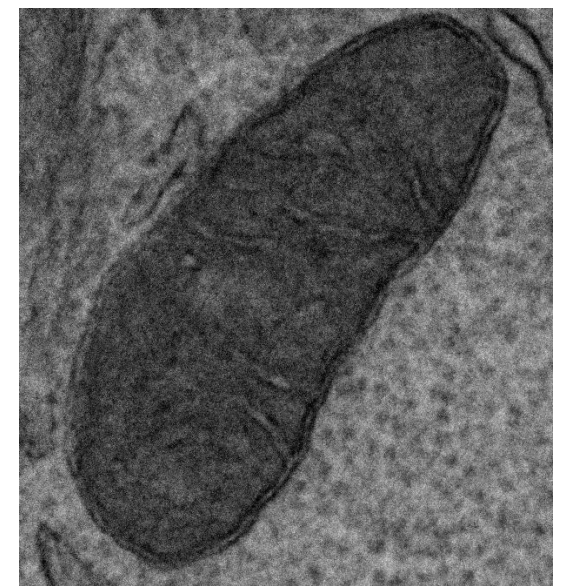
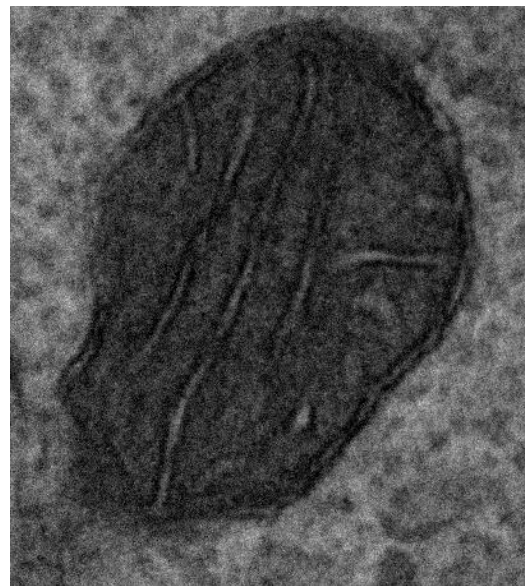
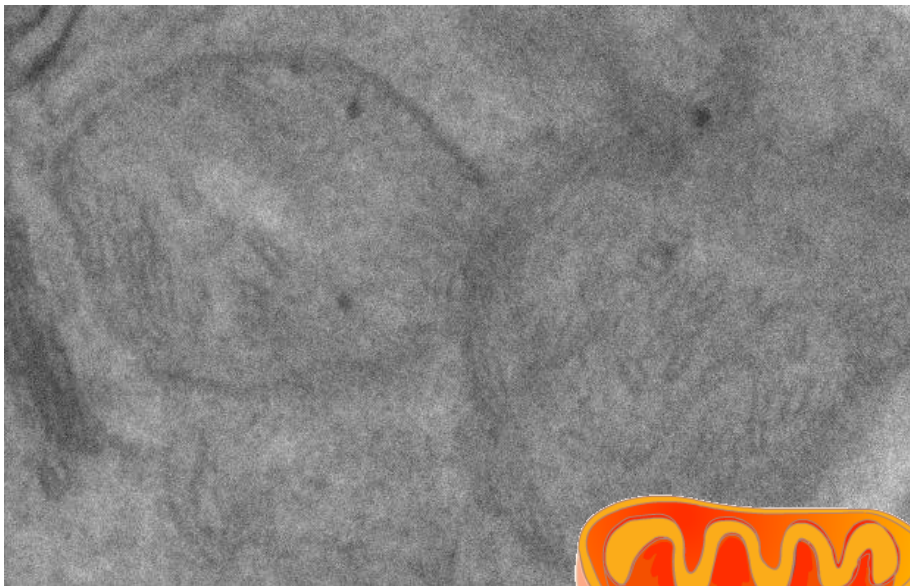
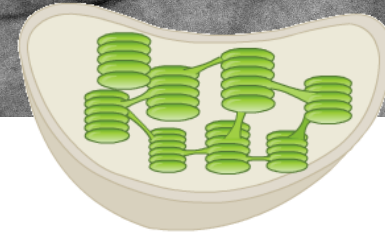
Soppcelle



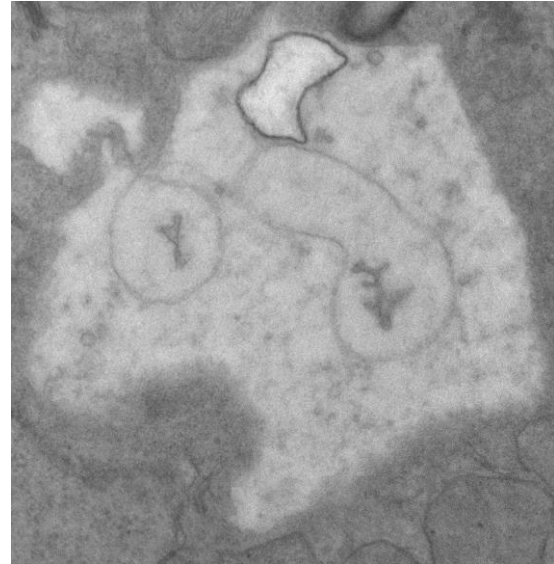
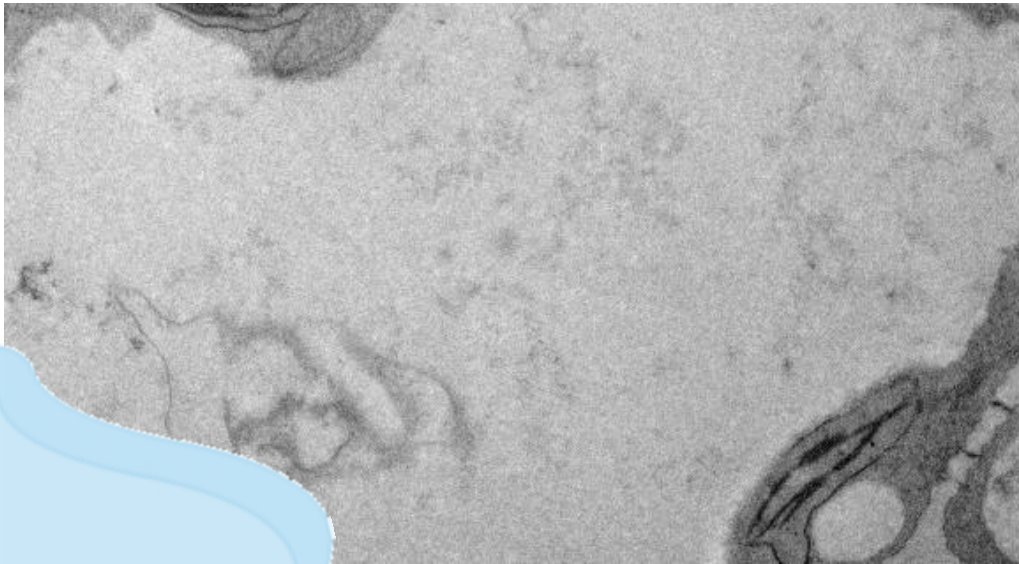
Plantecelle



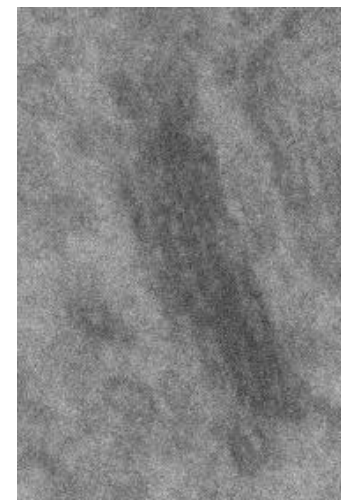
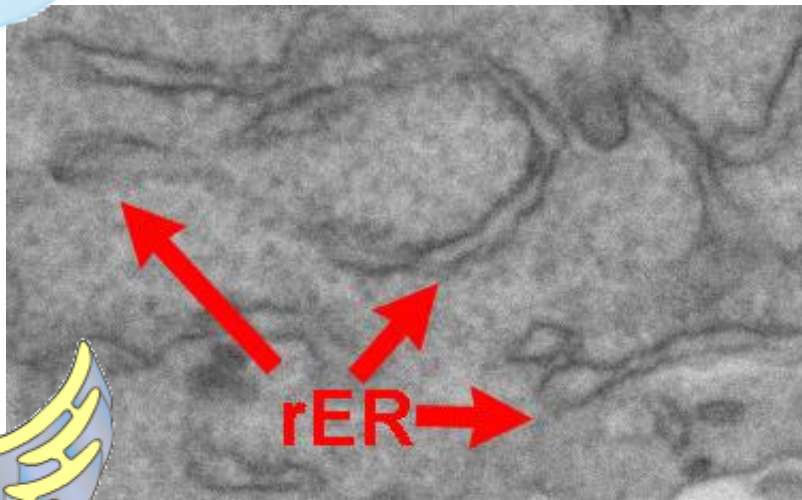
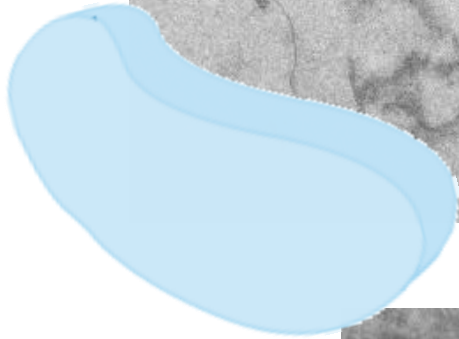
Kloroplastar



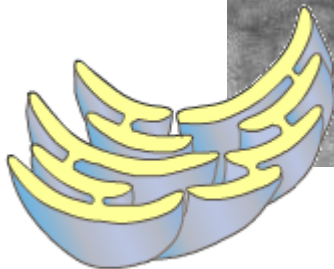
Mitokondriar



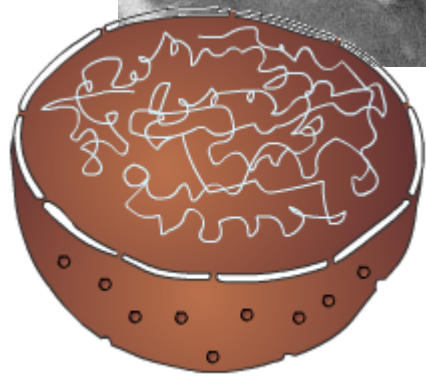
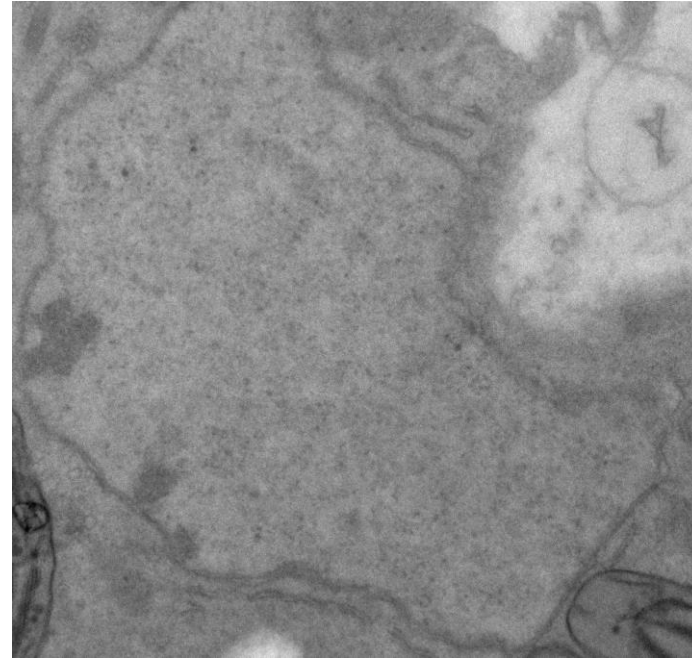
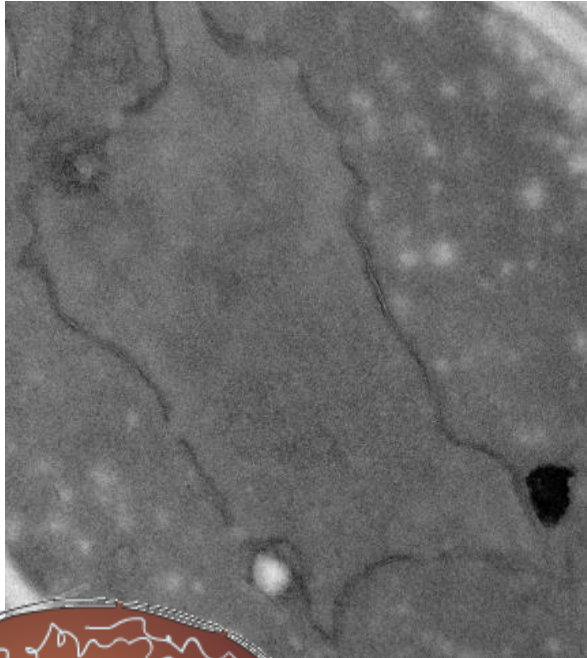
Planteceller med store vakuolar



Indre kanalsystem. Bitte små svarte prikker er ribosom.







Cellekjerne